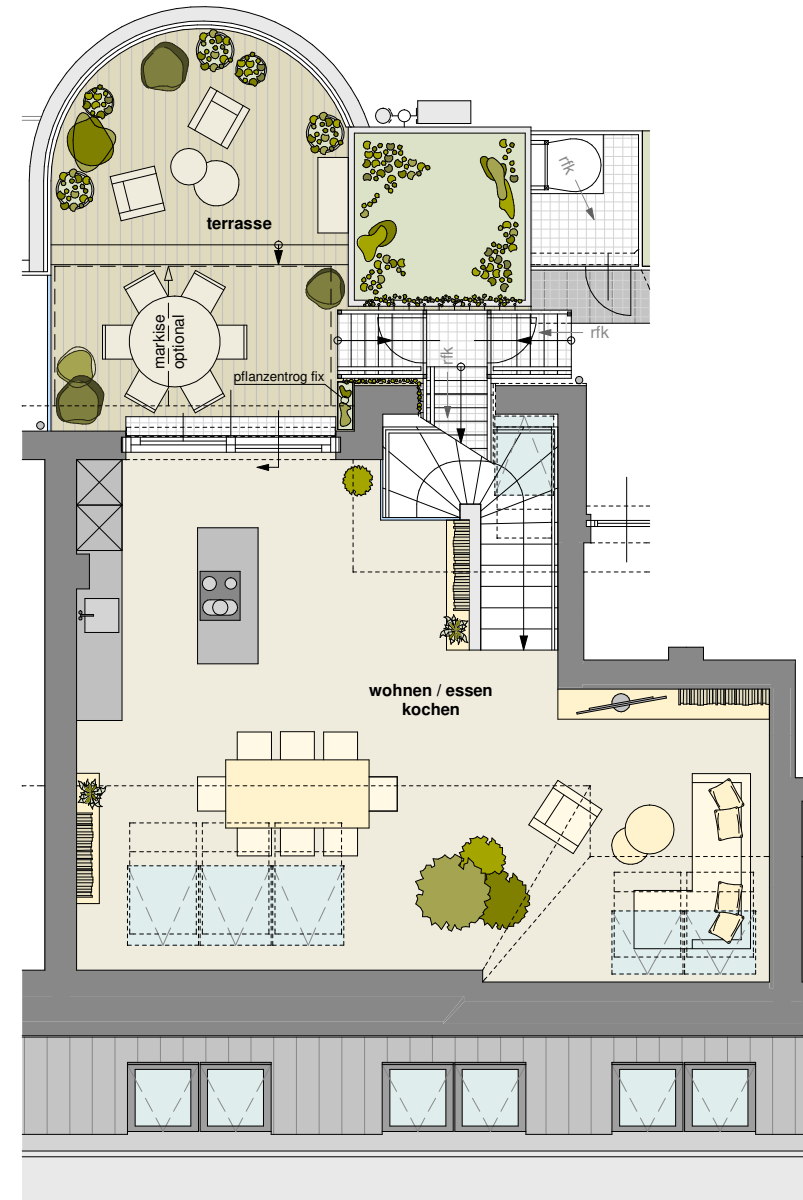
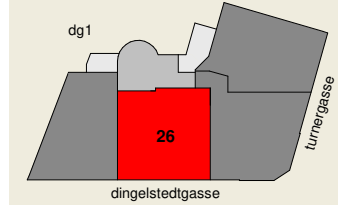
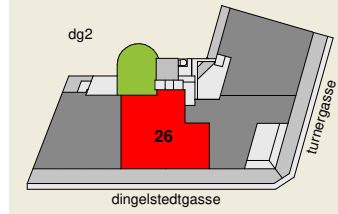


dachgeschoß 1

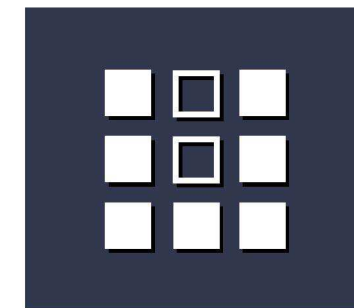


dachgeschoß 2

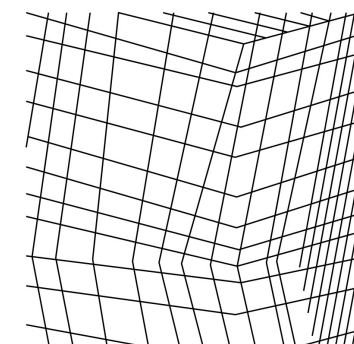
21-04-23
m = 1:100



top 26	
vorraum	13,57 m ²
bad / wc 1	3,89 m ²
bad / wc 2	8,19 m ²
abstellraum	4,08 m ²
schlafen 1	16,56 m ²
schlafen 2	13,61 m ²
schlafen 3	15,18 m ²
wohnen/kochen/essen	50,05 m ²
summe	125,13 m²
terrasse flachdach	19,27 m ²
summe	35,18 m²



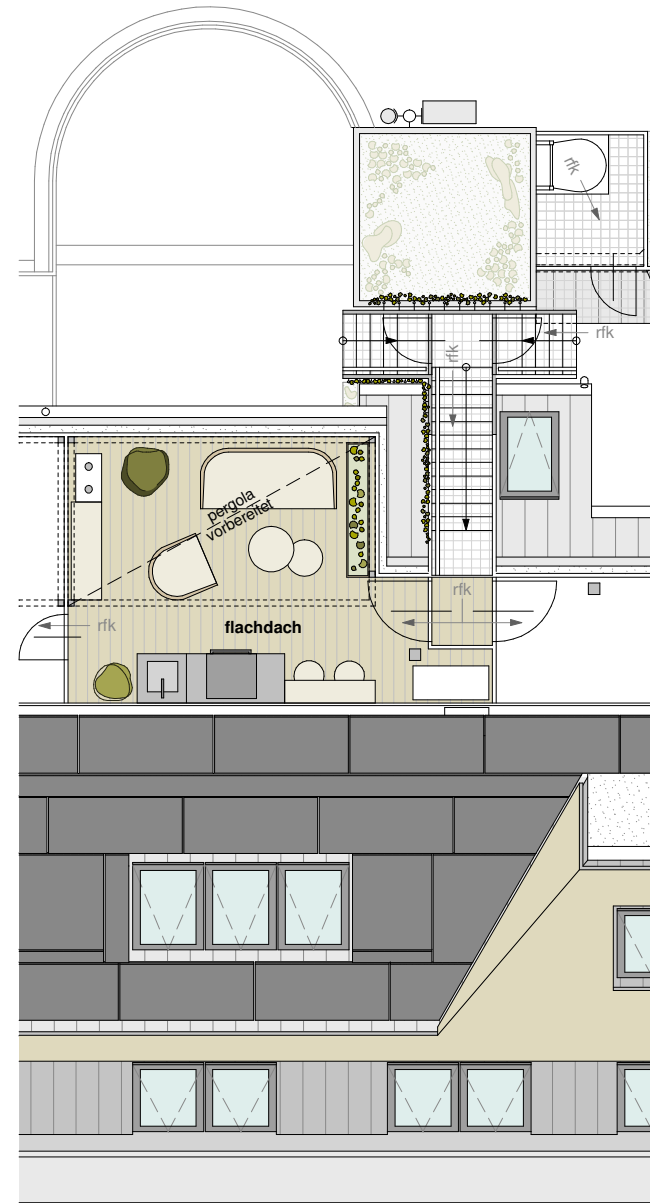
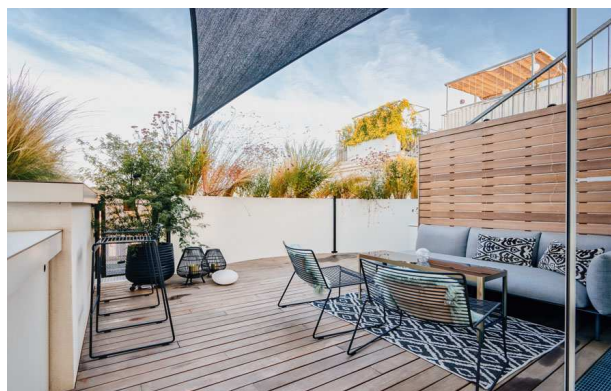
ULREICH
BAUTRÄGER GMBH



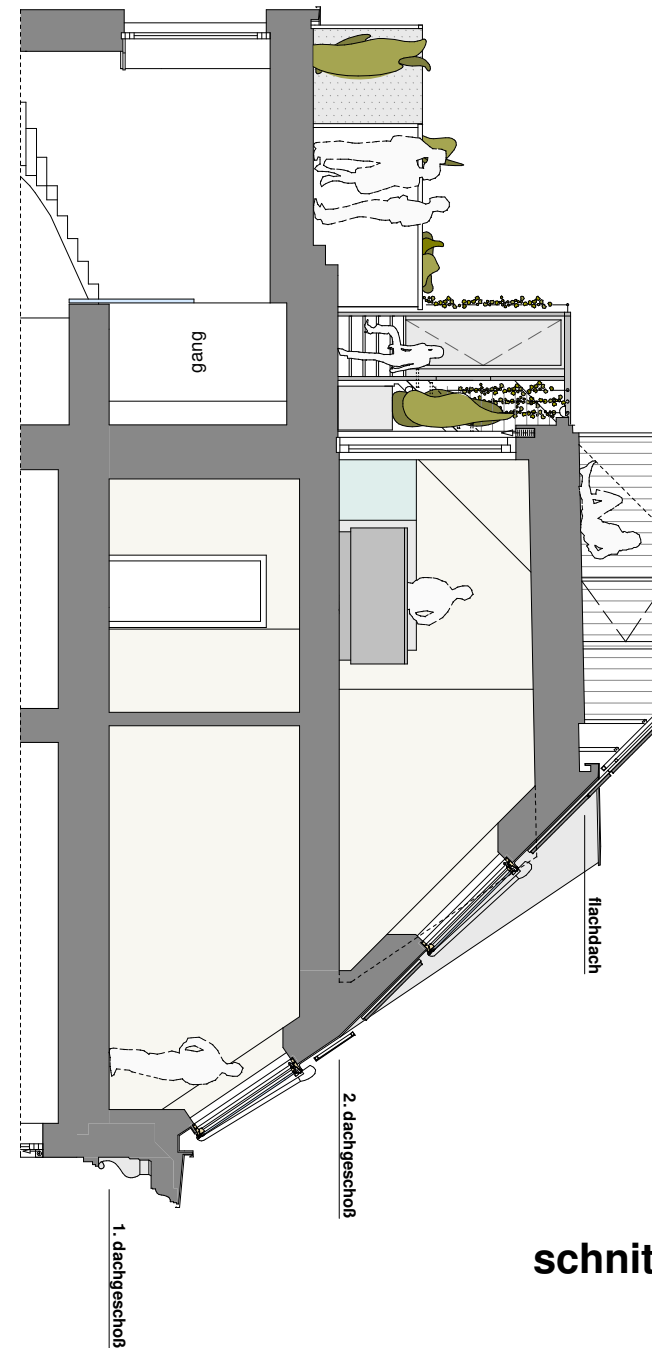
dreidimensional
zt-gmbh

symbolfotos
schematische darstellung - vertragsbestandteil sind polierpläne und ausstattungsbeschreibung

0 1 2 3 4 5m

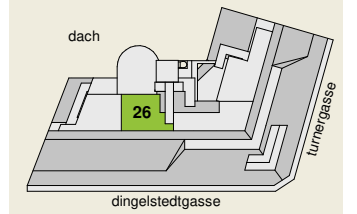


dach

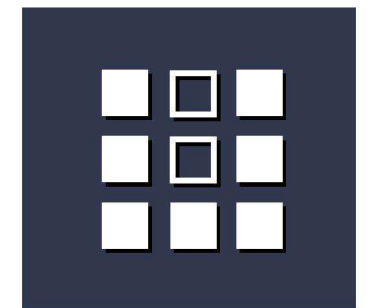


schnitt

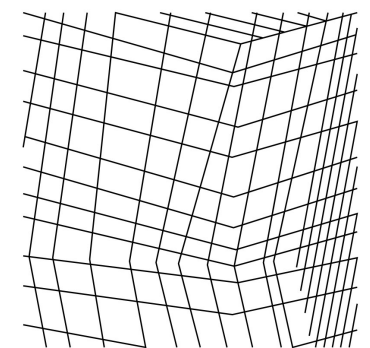
21-04-23
m = 1:100



top 26	
vorraum	13,57 m2
bad / wc 1	3,89 m2
bad / wc 2	8,19 m2
abstellraum	4,08 m2
schlafen 1	16,56 m2
schlafen 2	13,61 m2
schlafen 3	15,18 m2
wohnen/kochen/essen	50,05 m2
summe	125,13 m2
terrasse	19,27 m2
flachdach	15,91 m2
summe	35,18 m2



ULREICH
BAUTRÄGER GMBH



dreidimensional
zt-gmbh

symbolfotos
schematische darstellung - vertragsbestandteil sind polierpläne und ausstattungsbeschreibung

0 1 2 3 4 5m